

22-62

SOUTHFIELDS - PHASE I OF PALM BEACH POLO AND COUNTRY CLUB - WELLINGTON COUNTRY PLACE - P.U.D.

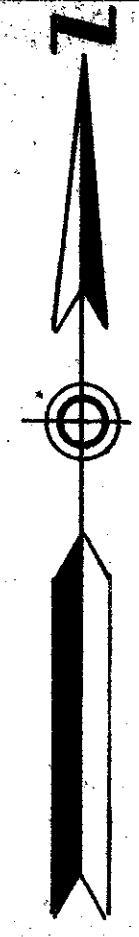
IN PART OF SECTION 21, TWP. 44 S., RGE. 41 E.

PALM BEACH COUNTY, FLORIDA
IN 4 SHEETS SHEET NO. 4

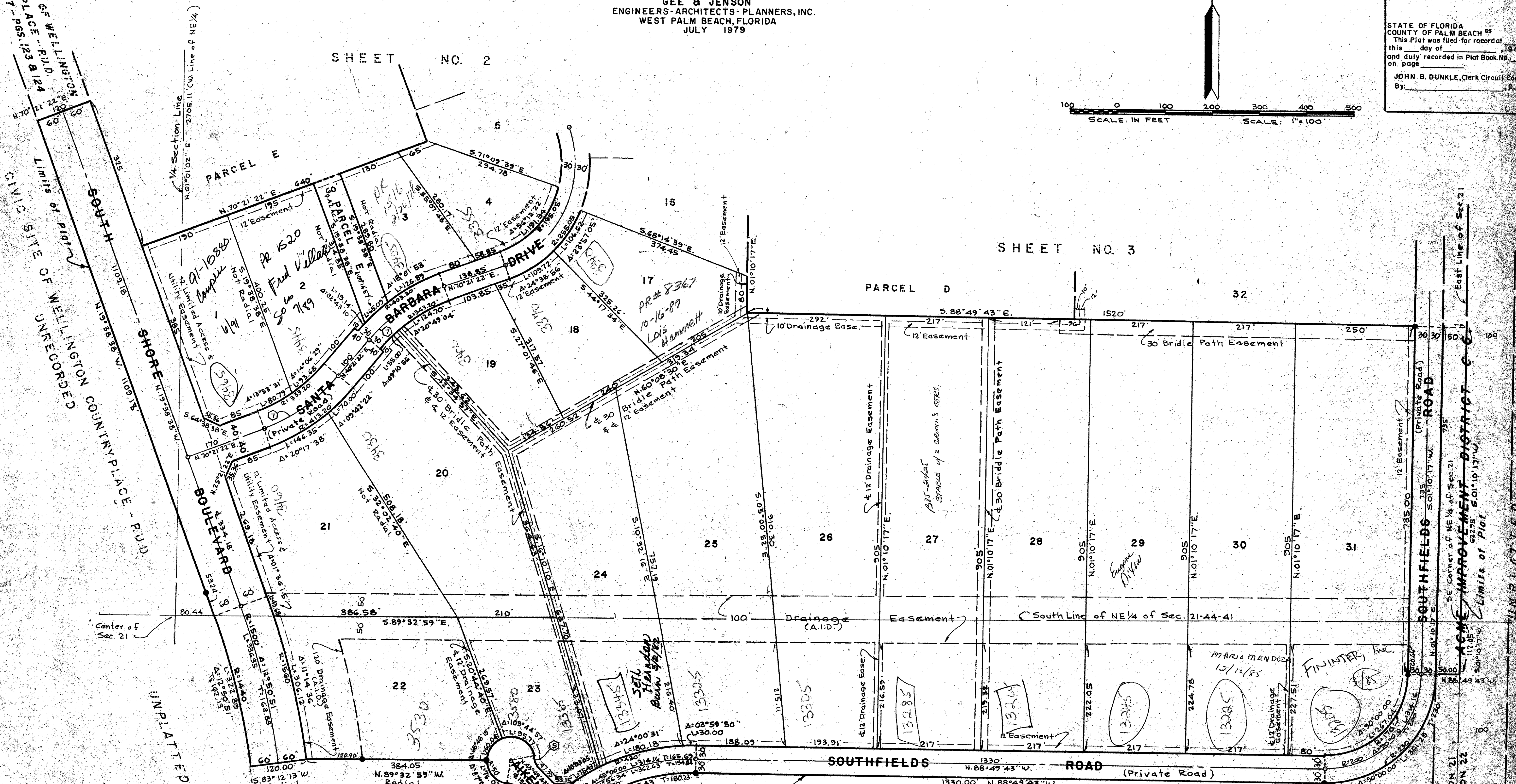
GEE & JENSON
ENGINEERS-ARCHITECTS-PLANNERS, INC.
WEST PALM BEACH, FLORIDA
JULY 1979

22

STATE OF FLORIDA
COUNTY OF PALM BEACH
This Plat was filed for record at
this _____ day of _____, 1979
and duly recorded in Plat Book No. _____
on page _____
JOHN B. DUNKLE, Clerk Circuit Court
By: _____, D.C.



SCALE IN FEET
SCALE: 1" = 100'



CURVE DATA
DENOTES CURVE NUMBER AND LOCATION

Ⓟ R: 25' A: 4:42°50'00" L: 18.62' T: 9.80'	Ⓢ R: 400' A: 0°56'34" L: 48.47' T: 24.26'	Ⓣ R: 573.20' A: 30°00'00" L: 195.41' T: 100.00'
--	---	---

NOTES
All bearings shown hereon are relative to an assumed meridian used throughout Wellington.
Building Setback Lines shall be as required by Palm Beach County Zoning Regulations.
There shall be no buildings or other structures placed on Utility Easements.
There shall be no buildings of any kind or construction or trees or shrubs placed on Drainage Easements.
Easements are for Public Utilities, unless otherwise noted.
● denotes Permanent Reference Monument.
○ denotes Permanent Control Point.
Where Utility Easements and Drainage Easements cross, Drainage Easements shall take precedent.

0333-303
Southfields-Ph. I P.B. Plat
C.C.
39/22

UNPLATTED

Flood = AO-1
2/14/41
PUD
Quad 78
352 = 17